

GLUE ANCHOR

GLUED ANCHOR POINT FOR BITUMEN AND PVC ROOFS

WATERPROOF

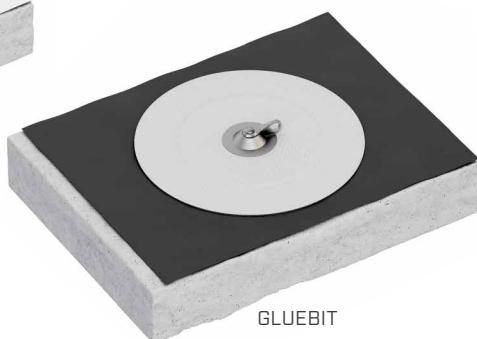
The application does not require any perforation of the PVC or bituminous membrane, guaranteeing perfect waterproofing of the roof.

FAST INSTALLATION

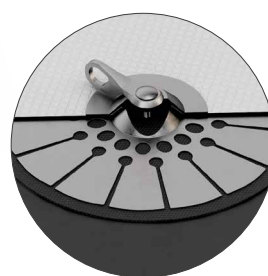
The system is quickly installed with very few tools.



GLUEPVC



GLUEBIT

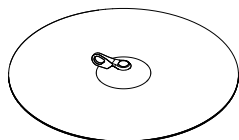


TECHNICAL DATA*

	GLUEPVC	GLUEBIT
substrate material requirement	-	ABB / SBS multilayer bitumen membrane with at least one polyester core PVC / polyester reinforced membrane
substrate tensile strength	≥ 900N/50 mm (EN 12311-2)	340 ± 20% N/50 mm
other substrate requirements	the substrate must be clean, free of dust, moss and algae and dry.	<ul style="list-style-type: none"> mechanically fastened (MF) with a minimum of 3 fasteners per m² ballasted with gravel at least 40 mm thick (approx. 60 kg/m²) partially glued (50% of total surface area) to a mechanically fixed bituminous roof waterproofing system

* The values indicated are derived from experimental tests carried out under the supervision of third party organisations according to the referenced standard. For a calculation report with minimum distances, according to the referenced normative requirements, the substructure must be verified by a qualified engineer before installation. On request, GLUE ANCHOR is also available for other types of membranes.

CODES AND DIMENSIONS

CODE	description	d ₁ [mm] [in]	pcs	
GLUEBIT	glued anchor point for bitumen roof with swivel eyelet max. roof slope 15° minimum surface around the anchor point (from the centre): 1.8 m ambient temperature of use: min. -30° C / max. 90°C	700 27.56	1	
GLUEPVC	glued anchor point for PVC roofs max. roof slope 15° minimum surface around the anchor point (from the centre): 2 m	520 20.48	1	