

PIPE LINK

INSTALLATION PIPE CONNECTION SYSTEM

PREFABRICATED

It improves the efficiency of prefabrication and reduces costs, cutting down the assembly time of prefabricated timber elements during construction. The connector can be installed without any tools. A simple cylindrical hole is all that is required. When assembling the elements, compensation for the 5 mm tolerance in each direction is guaranteed by the funnel-shaped sleeve.

SAFE

When installing the prefabricated elements, the pipes no longer need to be inserted between the individual elements, eliminating the risk of injury during all stages of installation.

SUSTAINABLE

Accurate planning reduces empty conduit wastage to a minimum.



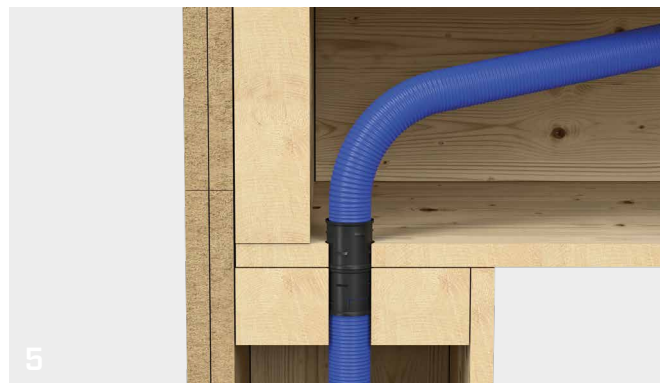
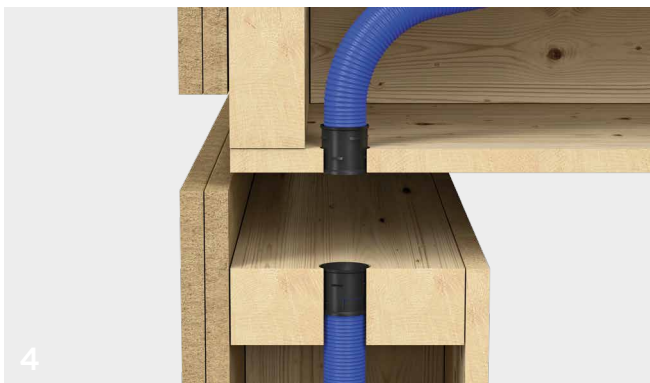
CODES AND DIMENSIONS

| CODE | for installation pipes Ø | | Ø hole in element | | pcs |
|------------|--------------------------|---------|-------------------|---------|-----|
| | [mm] | [in] | [mm] | [in] | |
| PIPELINK20 | 20 | 13/16" | 25 | 1" | 150 |
| PIPELINK25 | 25 | 1" | 30 | 1 3/16" | 100 |
| PIPELINK40 | 40 | 1 9/16" | 45 | 1 3/4" | 70 |

TECHNICAL DATA

| Properties | M20 | M25 | M40 |
|-----------------------------------|-----------------|----------------|----------------|
| Internal diameter Ø | 13 mm 0.512 in | 18 mm 0.709 in | 31 mm 1.220 in |
| External diameter Ø | 25 mm 0.984 in | 30 mm 1.181 in | 45 mm 1.772 in |
| Height | 31 mm 1.220 in | 31 mm 1.220 in | 31 mm 1.220 in |
| Weight | 3,8 g 0.135 oz | 4,6 g 0.162 oz | 9,1 g 0.321 oz |
| Temperature resistance | -5/+90 °C | | |
| Resistance to external influences | IP30 (EN 60529) | | |

MOUNTING




- 1 Hole in timber. The material must have a minimum thickness of 15 mm.
- 2 Insert the PIPE LINK in the hole with the funnel facing outwards, flush with the surface (self-locking).
- 3 Insert the installation pipe from the rear wall up to the interlocking edge. The pipe locks into place.
- 4 Repeat the procedures from steps 1 to 3 for all elements that need to be connected.
- 5 When installing the prefabricated elements, the pipes can be laid together without needing to be inserted into the joint, ensuring a perfect solution for subsequent cable laying.

RELATED PRODUCTS

When combined with the TUBE STOPPER, a clean cable outlet is also ensured.



TUBE STOPPER
page 152

| CODE | Ø [mm] | Ø [in] |  |
|------------|-----------|-----------|---|
| TUBESTOP20 | 20 | 0.8 | 20 |
| TUBESTOP25 | 25 | 1.0 | 20 |

